



# CLYDE MARINE SERVICES LTD



## ASD TUG

## CMS THUNDERER

### GENERAL

DELIVERY DATE	February 2024
BASIC FUNCTIONS	Towing and pushing
CLASSIFICATION	MCA Workboat Category 2 Bureau Veritas
NOTATION	1 ❌ Hull • MACH Escort Tug Unrestricted Navigation AUT UMS IMO Tier 3 FiFi 1

### DIMENSIONS

LENGTH O.A.	22.8m
BEAM O.A.	12.03m
DEPTH	4.4m
DRAUGHT AFT	5.7m
DISPLACEMENT	491 ton

### TANK CAPACITIES

FUEL OIL	51.4 m <sup>3</sup>
FRESH WATER	8.0 m <sup>3</sup>
SEWAGE	5.1 m <sup>3</sup>
FOAM	6.2 m <sup>3</sup>

### PERFORMANCES

BOLLARD PULL AHEAD	71Te
BOLLARD PULL ASTERN	66Te
SPEED	12.9 knots

### PROPULSION SYSTEM

MAIN ENGINES	2 X Caterpillar 3512C TA HD/D
TOTAL POWER	3804 bkW (5102 bhp) at 1800 rpm
PROPULSION	2 X Kongsberg Maritime US

### FIFI 1 SYSTEM

TYPE	main engine driven pumps. Capacity – 2 x 1400m3.hr
MONITORS	2 x 1200m3/hr , water/foam.

### AUXILIARY EQUIPMENT

GENERATOR SET	3 X Caterpillar C4.4
CAPACITY	73.2 kVA, 50Hz, 230/400V, 3 phase

### TOWING EQUIPMENT

WINCH	DMC (serves fore and aft)
CAPACITY	150 m x 88 mm dia
CAPSTAN	5Te at 16m/min
CRANE	Heila HLM 20-3S-D , 1.7Te at 10.5m

### ACCOMMODATION

	2 X Single Berth Cabins
	1 X 2 Berth Cabin
All accommodation & wheelhouse areas are air conditioned	

### NAUTICAL AND COMMUNICATION EQUIPMENT

Radar	Furuno FAR 1518-BB
Magnetic Compass	Cassens and Plath Reflecta
GPS Compass	Simrad GN70/HS80A
VHF fixed	2 x Sailor 7222
VHF portable	1 x Sailor SP3540
GPS	Simrad
Autopilot	Simrad AP-70
Navtex	Furuno NX-700B
AIS	Furuno FA-170



# CLYDE MARINE SERVICES LTD



## CONTACT DETAILS

### CLYDE MARINE SERVICES LTD

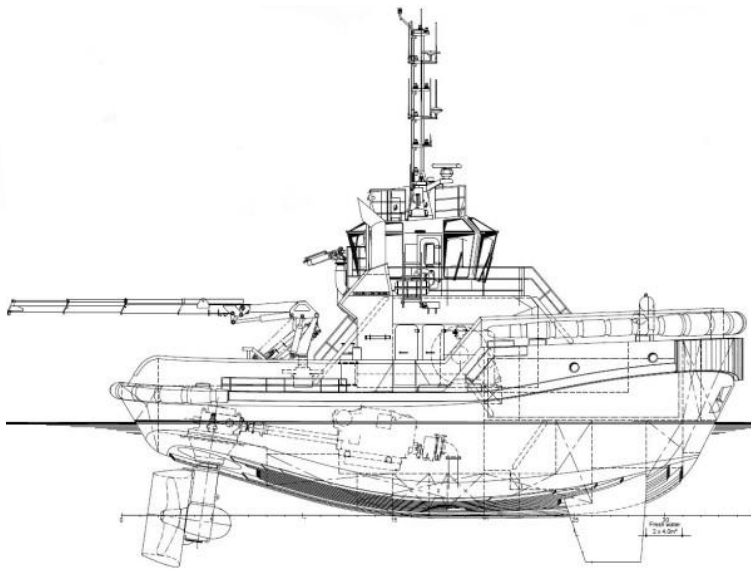
Victoria Harbour,  
GREENOCK,  
PA15 1HW  
SCOTLAND

**Tel:** 01475 721281

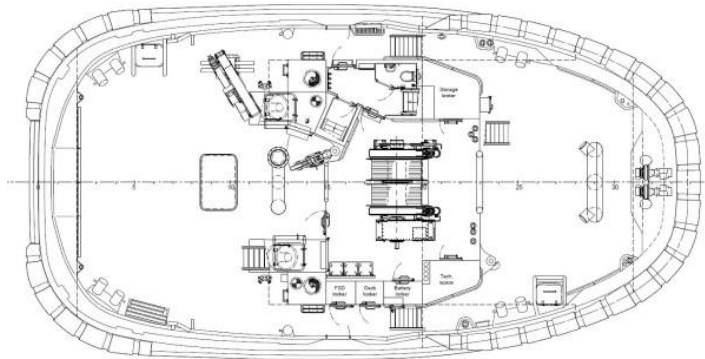
**Fax:** 01475 888023

**Email:** [hamish.munro@clyde-marine.co.uk](mailto:hamish.munro@clyde-marine.co.uk)

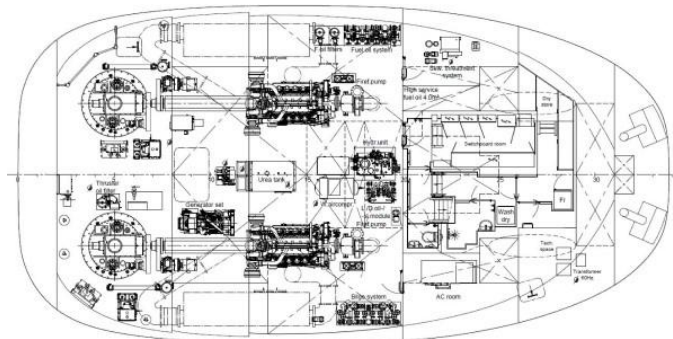
**[www.clyde-marine.co.uk](http://www.clyde-marine.co.uk)**



**Main deck**



**Below Main deck**



## CONTACT DETAILS

### **CLYDE MARINE SERVICES LTD**

Victoria Harbour,  
GREENOCK,  
PA15 1HW  
SCOTLAND

**Tel:** 01475 721281

**Fax:** 01475 888023

**Email:** hamish.munro@clyde-marine.co.uk

**www.clyde-marine.co.uk**